



# GAT MONTHLY MEMBERSHIP PROGRESS REPORT

Results as of: 3/31/2023

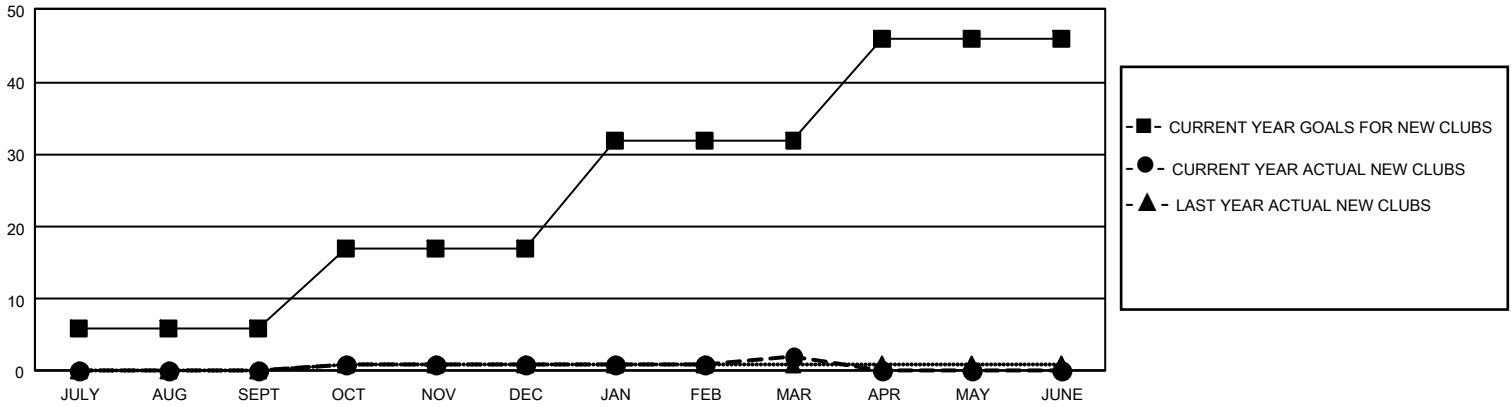
## GMT Constitutional Area 4, Group A

REPORT DOES NOT INCLUDE CLUBS IN UNDISTRICTED AREAS.

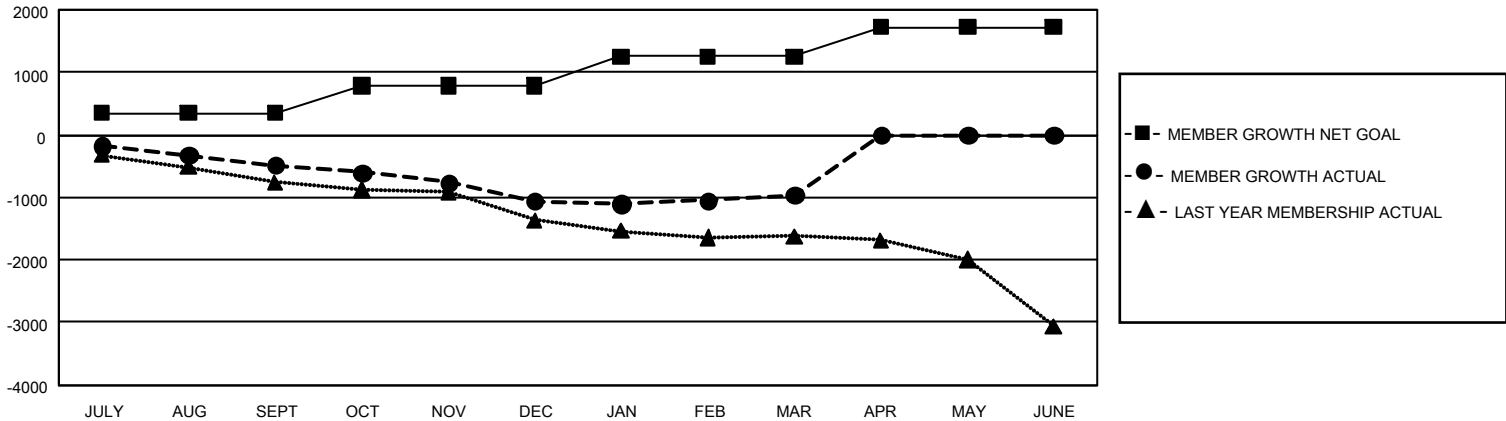
Clubs			
RESULTS FOR 2022-2023			
QUARTER	NEW CLUB GOAL	NEW CLUBS	DROPPED CLUBS
JULY/AUG/SEPT	18	0	24
OCT/NOV/DEC	33	1	16
JAN/FEB/MAR	45	1	9
APR/MAY/JUNE	42	0	0

Members			
RESULTS FOR 2022-2023			
QUARTER	MEMBER GROWTH NET GOAL	MEMBER GROWTH ACTUAL	DROPPED MEMBERS ACTUAL (including transfers)
JULY/AUG/SEPT	346	387	810
OCT/NOV/DEC	442	703	1,231
JAN/FEB/MAR	466	975	798
APR/MAY/JUNE	466	0	0

GOALS AND ACTUAL NEW CLUBS CUMULATIVE



GOALS AND ACTUAL MEMBERS CUMULATIVE



DROPPED CLUBS: 49	890 CLUBS OF 1,966 ADDED 1 OR MORE NEW MEMBERS	<u>GENDER DISTRIBUTION</u>	
		MALE	32,012 (76.82%)
<u>DROPPED MEMBERS</u>		FEMALE	9,661 (23.18%)
DECEASED	398	NON BINARY	0 (0.00%)
CLUB CANCELLED	184	PREFER NOT TO ANSWER	1 (0.00%)
OTHER	2,257	TOTAL FAMILY UNIT MEMBERS	1,567
<b>TOTAL</b>	<b>2,839</b>	FAMILY MEMBERS PAYING HALF DUES	777

[CLICK HERE FOR CUMULATIVE MEMBERSHIP DATA](#)